

# **The Norwegian local community movement**

Data from a membership survey of  
neighbourhood clubs 2015

by Harald Koht PhD

Presentation at

Oslo seminar for CExA Asociatia

Center for Academic Excellence, Romania

5 April 2016



<b>Recipients of survey form:</b>	<b>827</b>
<b>Number of replies:</b>	<b>137</b>
<b>Average number of individual membership in each club</b>	<b>122</b>

# How active are the clubs?

Response	2012	2015
Very active	18,8	17,5
Medium	52,3	50,4
Low	26,6	29,2
«The club is inactive»	2,3	2,2

Question: What is your general impression of the activity level in your local club?

# Volunteering at the club level

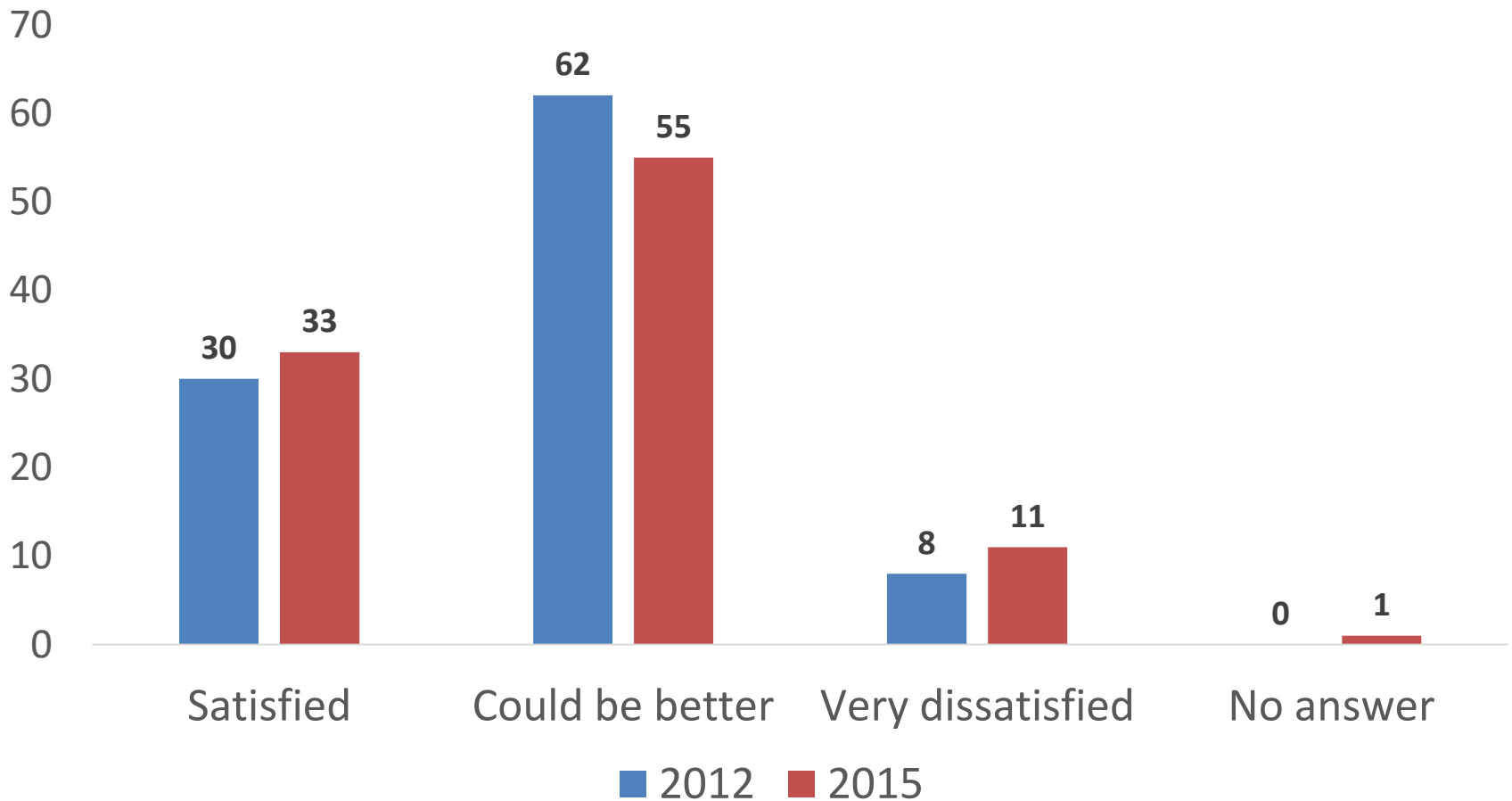


	Averages
Number of actions	4,2
Number of participants	29,5
Total number of hours	165

# Social activities and traditions count

<b>Event types</b>	<b>2012</b>	<b>2015</b>
Christmas events	34,5	35,8
New Year events	8,7	6,6
National Holiday, 17 May	20,0	15,3
Midsummer Eve	43,4	27,7
Halloween	2,0	5,8
For new neighbours	6,9	2,9
Party for members	38,9	23,4
Trips	5,0	6,6
Lotteries, bingo	15,7	10,2
Other events	--	29,9

# Satisfaction with traffic issues: Most say the situation could be improved



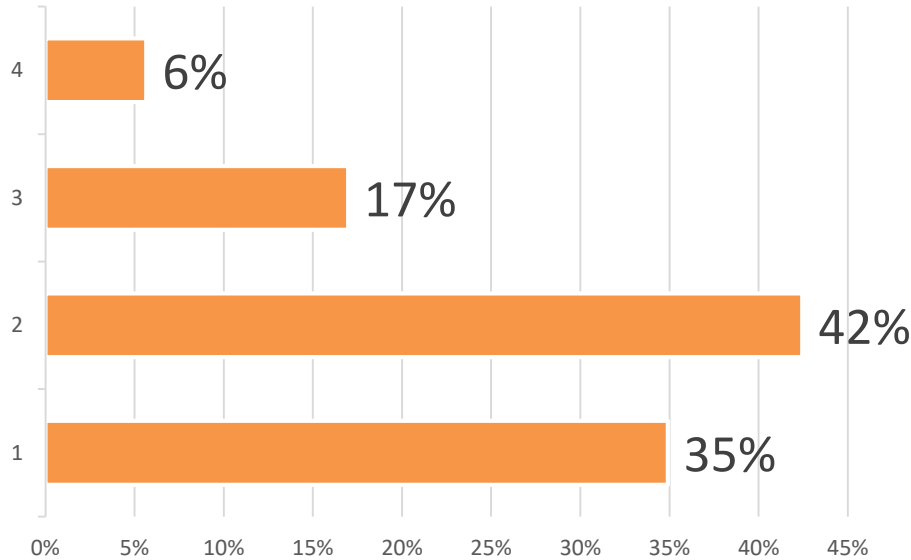
# Ownership of neighbourhood club house

Does the club own its own club house?		
	2012	2015
Yes	18	20
If not, who owns the property?		
Private interests	22	16
Other associations	45	40
Municipality	33	41

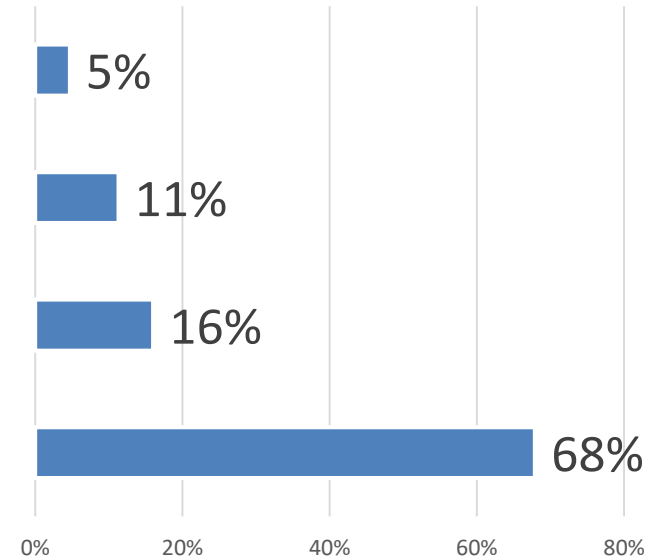
# Playgrounds

The municipality owns the property, the neighbourhood club owns the equipment

## Property



## Equipment





# Private roads

## Private roads within the area covered by the club?

Yes	53 %
-----	------

## Who maintains these private roads?

The neighbourhood club	50 %
Another association devoted to road maintenance	13 %
Individual property owners	36 %
Municipality only	0 %
Municipality partly	1 %

# Formal means of contact and meeting places for communication and cooperation between club and municipality

	<b>2012</b>	<b>2015</b>
Written hearings	52,6	41,6%
Oral hearings	42,3	24,1%

# Informal means of contact

	2012	2015
Open half hour at beginning of meetings	17,1	8,8
Conferences	20,9	8,0
Committee memberships	10,9	7,3
User committees	6,4	5,8
District committees	10,2	5,8
Focus groups	4,6	4,4
Budget participation	2,7	2,2
Deputations	5,8	2,2
Web-based debate forum	3,7	1,5
Surveys	2,9	1,5
Planning groups	3,9	0,7
Other	--	23,4

# An happy relationship?

How does your club evaluate its relationship with the municipality?

	<b>2012</b>	<b>2015</b>
Very good	13,3	10,2
Satisfactory	48,4	49,6
Poor	26,6	19,7
No contact	11,7	15,3
No answer	--	5,1

# Economic support

Did you receive funding from the public authorities?		
	2012	2014/15
Yes	27	30
No	63	60
No answer	0	10
For running expenses	Kr.	12 973
For investments	Kr.	44 588

# Responsiveness

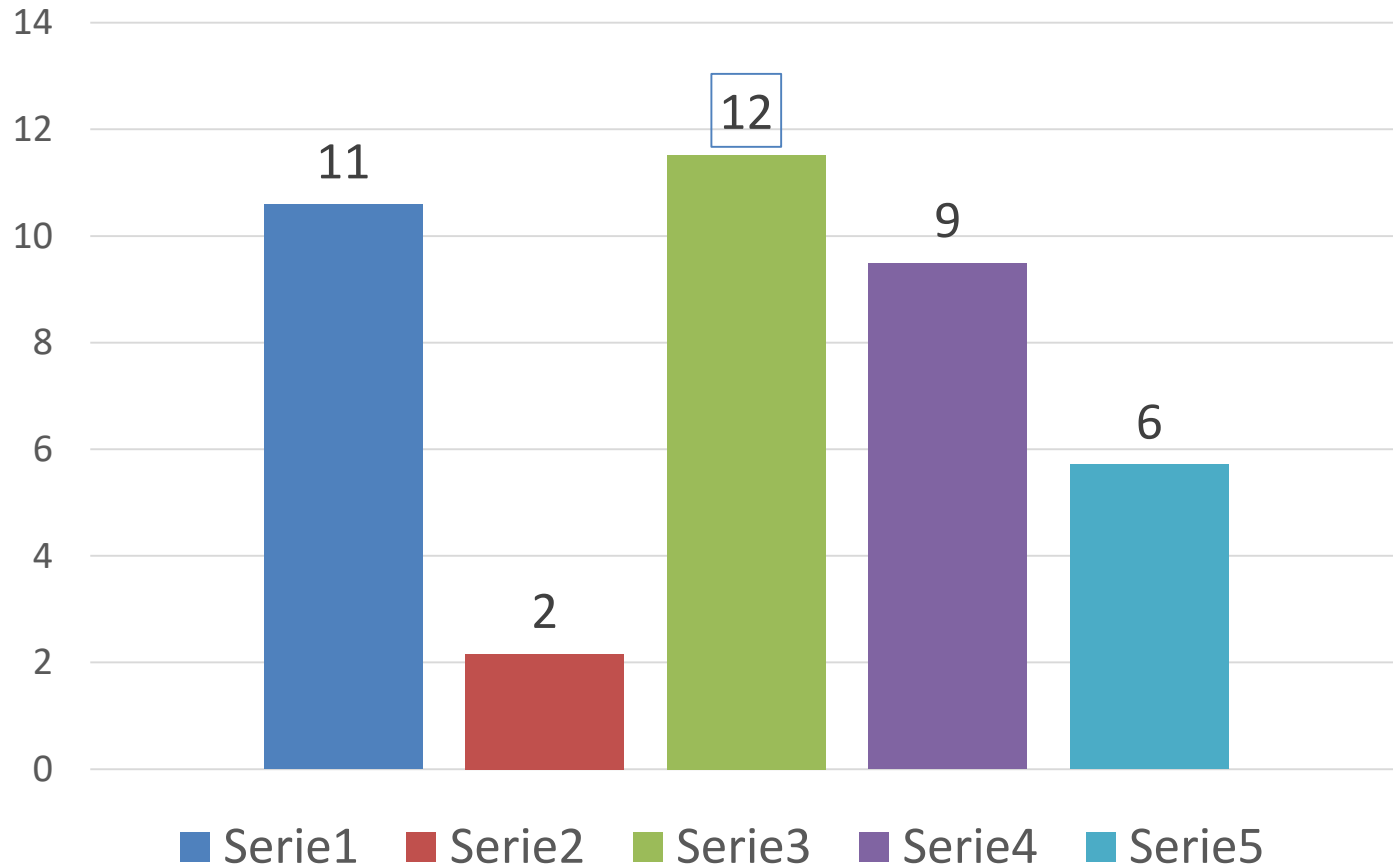
## Does the club receive answers when it contacts the municipality?

<b>Always</b>		<b>20,4</b>
<b>Usually</b>		<b>45,3</b>
<b>Sometimes</b>		<b>22,6</b>
<b>Never</b>		<b>1,5</b>
<b>Don't know. not relevant, no answer</b>		<b>10,2</b>

## Have you complained about non-response to higher authority in those cases when you did not receive answers?

<b>Yes</b>		<b>6,6</b>
<b>No</b>		<b>86,9</b>
<b>Comments</b>		<b>11,0</b>

# Problems of crime, violence, vandalism, narcotics, and social harassment



# VAT refunds 2015

Did your neighbourhood club ask for a VAT refund in 2015?			
Yes			37%
No			50%
Does not know about this facility			6%
No answer			7%
Size of refund			
Average		NOK	16 483
Median		NOK	8 000